

Float Plan VCRC Coastal Row

Date: November 21 2021

Trip Leader(s):

1. XXXX - phone

On Shore contacts:

1. XXXX - phone

Meet time: 7:30 am

First session: 8 am-10:00 am

Second session (interest dependent): 10 am-12 noon

Aim: get out and have fun in the Coastal boats!

Launch site: boat ramp at Cattle Point, Oak Bay

Route: Weather dependent- routes will be determined when on site.

1. Cattle Pt, via shoreline to Ten Mile Pt and return (10 km)
2. Cattle Pt around Chain Islets and return (7-9 km)
3. Cattle Pt around/through Chatham and Discovery Islands (14 km)
4. Cattle Pt around Discovery and Chatham Islands via Chain Islets (17km)

Recommend 2 groups (based on crew speed). Groups could choose different routes.

Group 1: C4x+s, C2x

Group 2: C2x, C1x, C2x

There can be strong currents in Baynes Channel (btw Ten Mile Pt and Chatham Island) and especially in the channels around and btw Chatham and Discovery Islands. Wind against tide will create large, steep waves in areas of strong current.

There can be significant tide rips in the Discovery- Chatham Islands, particularly in the channels. Avoid Routes 3 and 4 (Chatham -Discovery Islands) if wind against tide, ie SE wind, or winds greater than 10 kts (18kph). Route 4 via Chain Islets is slightly more protected, with shorter channel crossing than going directly to Chatham from Cattle Pt.

[Check here](#) for more information on paddling to Chatham-Discovery Islands.

Timeline:

- | | |
|---------|------------------------------------------------------------------------------------------------------------|
| 7:30 am | meet, review safety and session plan, decide on route(s) |
| 7:45 am | unload and launch |
| 8 am | meet on water |
| 9:45 am | latest return time. Crews returning earlier will bring boats out, ready to load or to launch for session 2 |

Equipment: All boats are Eurodiffusion Coastal boats, VCRC oars or personal oars.

- VCRC C4x+ (red hull)
- VCRC C4x+ (red hull)
- VCRC C2x (green hull)
- VCRC C1x (green hull)

VCRC C1x (white hull, blue? deck)
OARCA C2x
Liteboat C2x + dolly

2 4x+ dollies, 2 C2x dollies, 2 C1x dollies

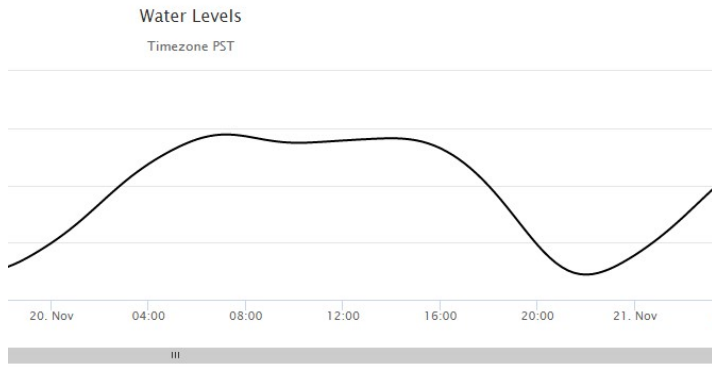
Safety Equipment:

Crew: throwline, VCRC Safety Kit, VCRC emergency blanket, cell phone, VCRC VHF radio, tools (10mm wrench, 13mm wrench for OARCA C2x, allen keys)

Personal gear: water bottle, PFD with whistle, warm socks, toque

Light: Sunrise 7:3am Sunset 4:27 pm

Tides at Oak Bay: small tide changes High 7:14 am 9.51 ft Low 10:36 am 8.86ft High 2:34 pm (9.19ft)



Currents:

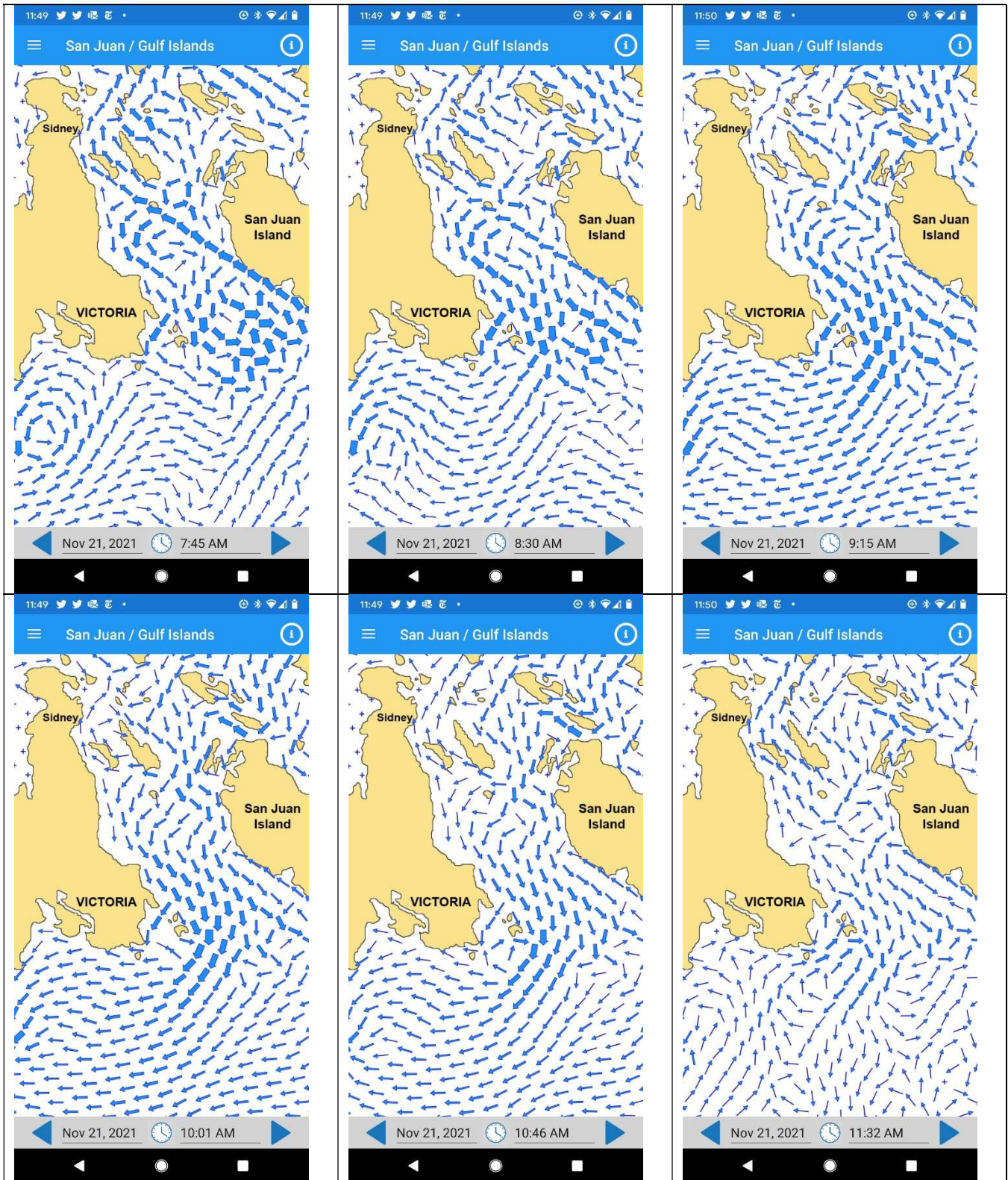
Race Passage Current: Turns 6:07 am, Max. 9:22 am -4.2kts (ebbing), Turns 12:56 pm

Baynes Channel: current is about 75% of Race Passage, 15 minute earlier: max: 9 am, 3kts (ebbing)

Mayor Channel (btw Oak Bay and Chain Islets): current is about 1/2 that of Baynes Channel.

Currents during session will be maximum 3 kts (9 am)

Predicted currents according to PNW Current Atlas.



Legend (knots):



The larger the arrow the faster the current.

Wind projections: 8 am 5+ kts S wind decreasing over the morning (as of Wed Nov 17)

Swell:

Water temperature 10° C

Air temperature

Visibility

Hazards:

- *Ramp:* may be slippery
- Area including launch ramp is exposed to SE and E winds which predominate in fall and winter months.
- Current and tide rips in Baynes Channel and around Chatham and Discovery Islands, Plumper Passage and off Gonzales Point. Beware of potential for steep breaking waves created by wind against tide.
- Watch for entry/egress of recreational boat traffic near Oak Bay Marina, Royal Victoria Yacht Club and Cattle Point Boat ramp. Smaller commercial traffic also transits Plumper Passage and Baynes Channel if current is favourable.
- Light-gentle breeze from South forecast for November 21 8am-12 pm, with only moderate current (3kts maximum) - suggests conditions for crossing to Chatham-Discovery will be good. Winds are forecast to decrease over the morning. Group will have a weather briefing prior to confirm route(s) prior to departure.

Safe Beaches: Willows Beach, Cadboro Bay Beach, Great Chain Island- south side, pocket beaches on Discovery and Chatham Islands. Note that Chatham Island and north side of Discovery Island are Songhees Reserve lands with restricted access.

Call for help

Emergency VHF Ch 16

Report a Search and Rescue Emergency – Toll Free 1 800 567-5111, or #727

Emergency Services - Call 911

Other resources:

[VRS best practices for safe rowing and safety boat driving](#)

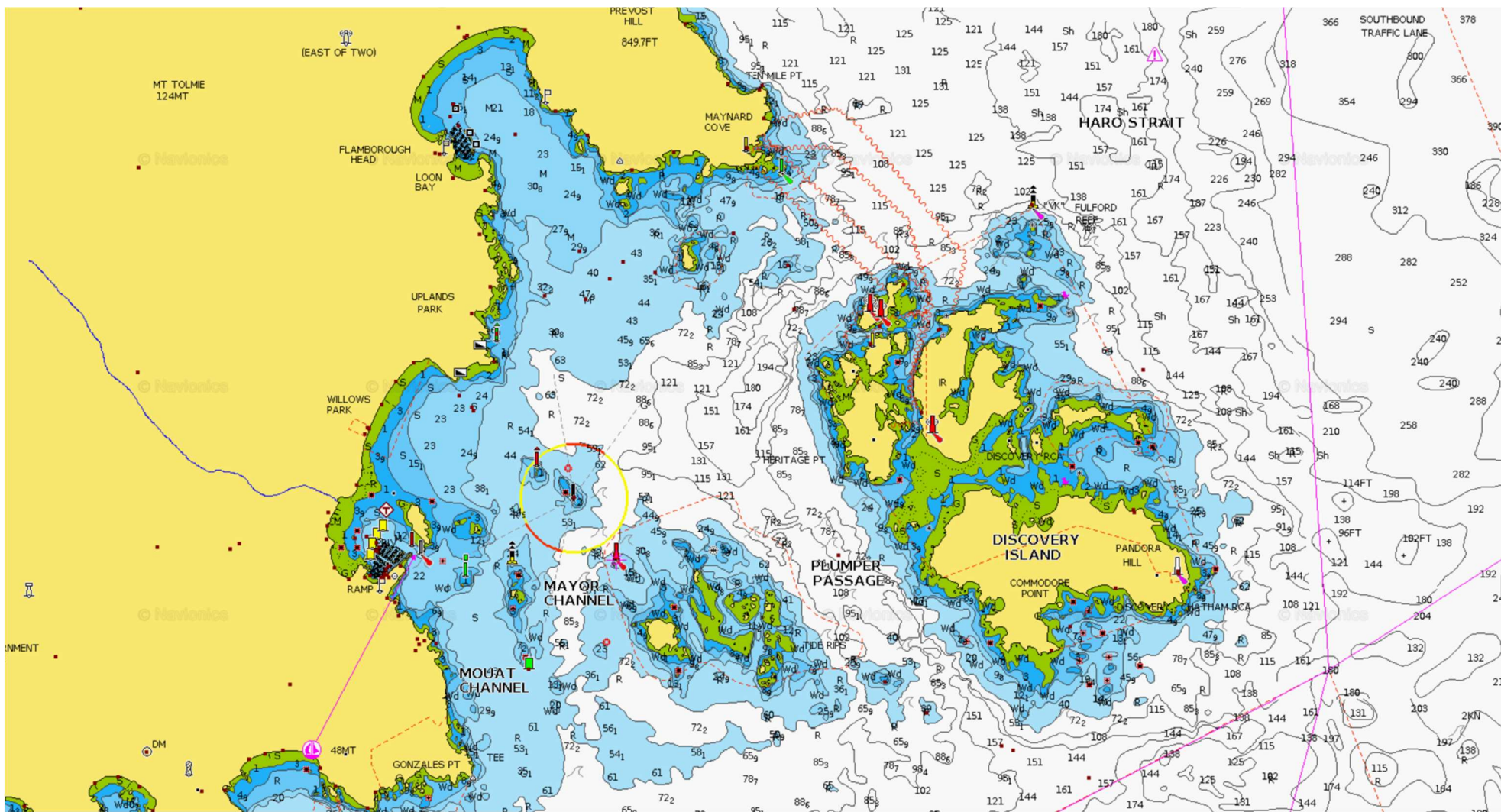
[Environment Canada Marine Weather Forecast](#)

[Discovery Island Weather Station](#)

[Big Wave Dave – willows beach webcam and weather forecasts](#)

[CGC Search and Rescue](#)

[World Rowing Coastal Float Planning video](#)



9 km



7 - 10 km



14 km



17 km

